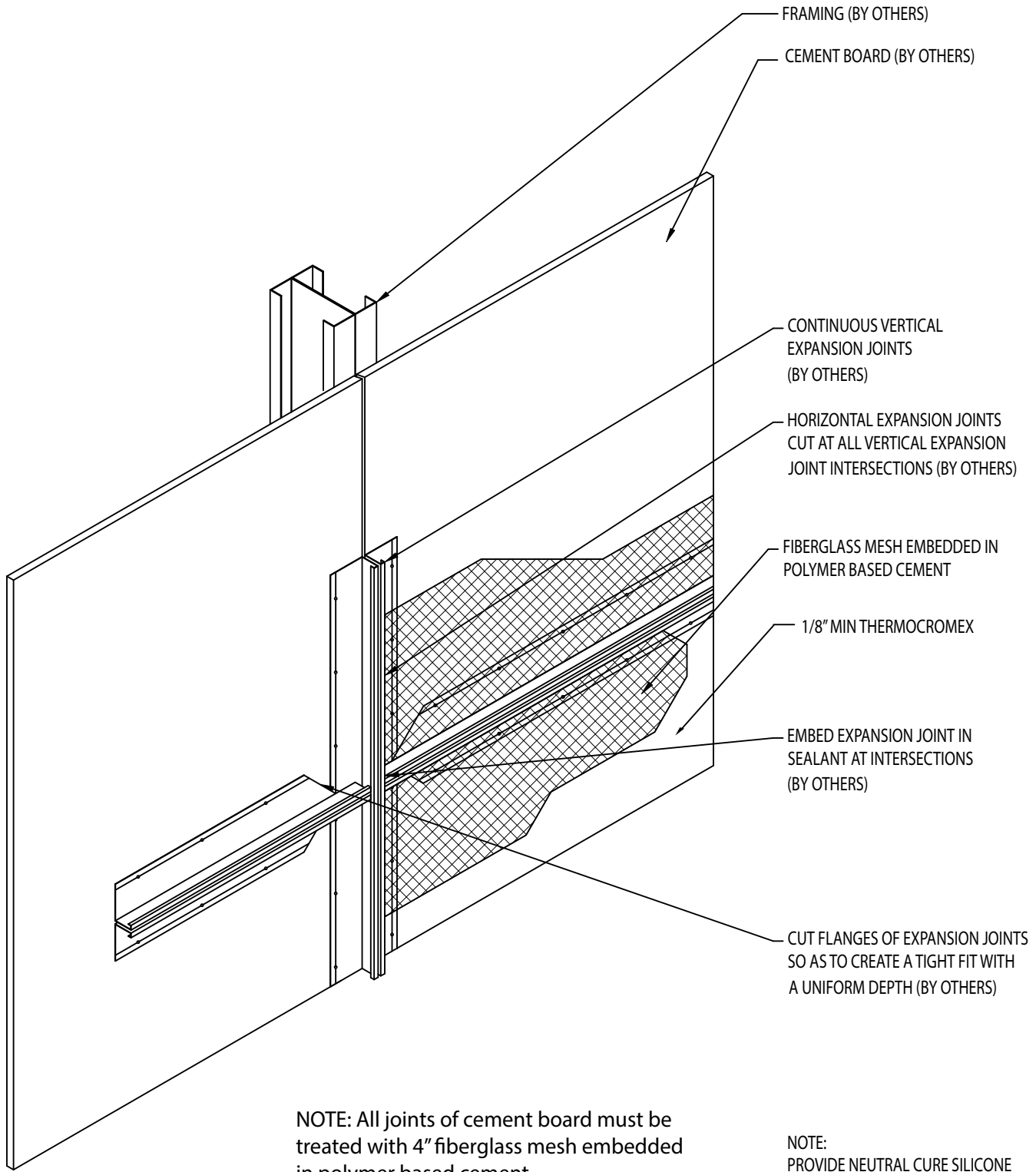


THERMOCROMEX OVER CEMENT BOARD EXPANSION JOINT INTERSECTION



NOTE: All joints of cement board must be treated with 4" fiberglass mesh embedded in polymer based cement.

NOTE: PROVIDE NEUTRAL CURE SILICONE BEDDING SEALANT AREA BEHIND EXPANSION JOINT INTERSECTIONS. (BY OTHERS)

SCALE = 1" = 1'-0"